




Whitemoor Lakes

20th - 22nd November

Barley Green Lane,
Lichfield,
WS13 8QT

<https://activity-centres.naycacuk.co.uk/whitemoor-lakes/>



The screenshot shows the NAYC-ACUK website. The header features the logo "nayc acuk" with the tagline "releasing potential in all". Below the logo is a search bar with the text "Search here..." and a magnifying glass icon. A vertical navigation menu on the left lists the following links: HOME, ABOUT US, DAY ACTIVITIES, OUR ACTIVITIES, FACILITIES, PACKAGES, GROUPS, BOOK ONLINE, OUR CENTRES, and BLOG. The main content area displays a large photograph of a red barn complex situated next to a blue lake. In the bottom right corner of the image, there is a white circular icon containing a downward-pointing arrow. The footer is a black bar with white text listing the following links: NAYC-ACUK HOME, ACTIVITY & TRAINING CENTRES, CONFERENCING, YOUTHWORK, and KING'S PARK SPORTS.

nayc
acuk
releasing potential in all

ACTIVITY &
TRAINING CENTRES

Search here... 🔍

HOME
ABOUT US
DAY ACTIVITIES
OUR ACTIVITIES
FACILITIES
PACKAGES
GROUPS
BOOK ONLINE
OUR CENTRES
BLOG

▼

NAYC-ACUK HOME | ACTIVITY & TRAINING CENTRES | CONFERENCING | YOUTHWORK | KING'S PARK SPORTS

Drop off and pick up

- Please drop pupils off at the back gate as usual, at normal time, with their cases/bags
- Please pick up pupils from Whitemoor Lakes at 2pm. Any shared lifts please let us know prior so we can make a note of who is going home with who.



What will the children get out of the visit?

- Learn new skills
- Independence
- Confidence
- Enjoyment
- Leadership
- Initiative
- Much more!

What will the children get out of the visit?

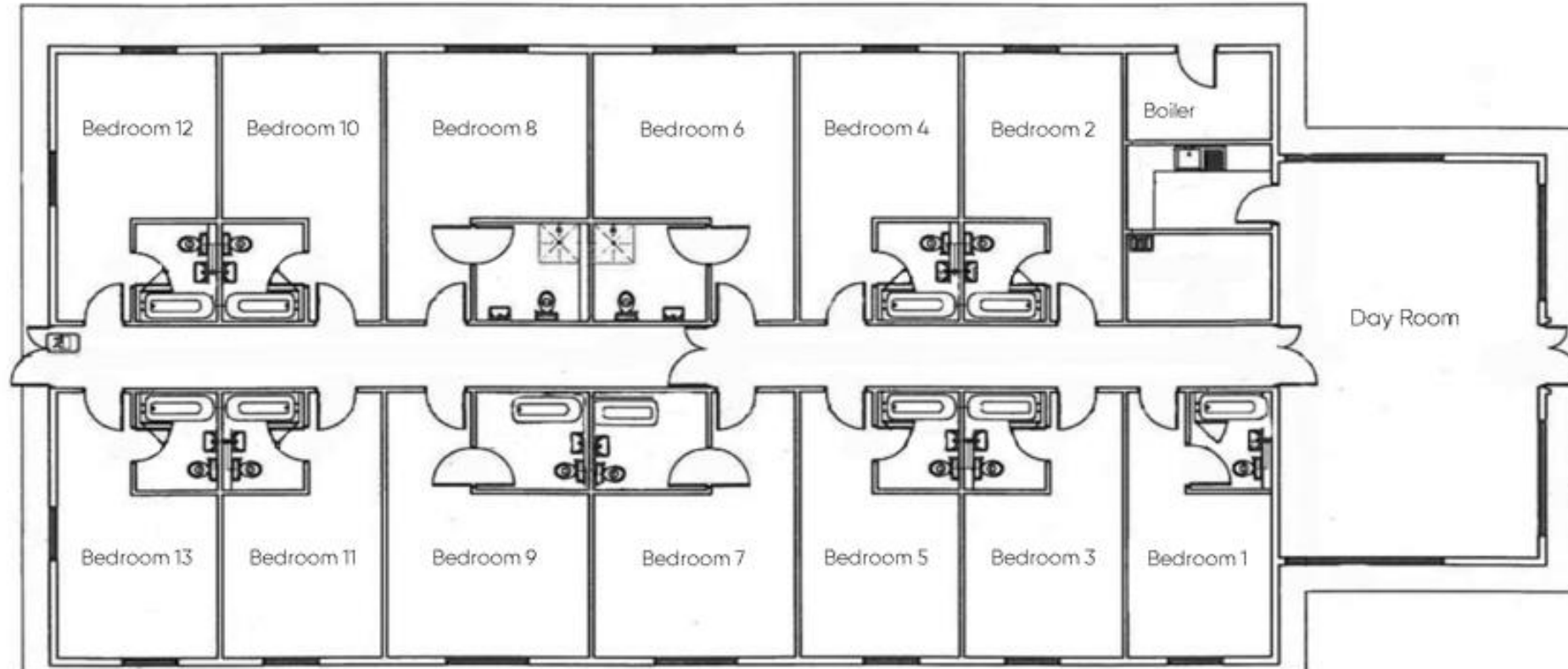
➤ <https://www.youtube.com/watch?v=q7kAEHgI8A8&t=2s>

- On arrival we will be met by an instructor who will be our liaison during our stay. They will welcome us, answering any questions we may have.

Site Map



Grasmere Lodge



We will put a limit of 4/5 children to a room. Rooms sleep 3-5 children.
Rooms will be chosen by staff.

Meal Times

	Monday - Sunday
Breakfast	8.30am
Lunch	1.00pm
Evening Meal	6.00pm

Kit List:

	One set of clothes per day
	Warm layers
	Trainers or outdoor shoes
	Waterproof jacket
	Sun hat or woolly hat and gloves
	Hair bobbles for long hair

Indoor Activities	
	Indoor Shoes

	Waterproof trousers
	Wellington boots
	Torch

	Pocket money (we recommend no more than £5)
	Packed Lunch (if you are arriving at the centre in the morning)
	Towel
	Wash kit (toothbrush, tooth paste, soap, flannel, shampoo, roll on deodorants only)
	Nightware/Pyjamas
	Enough underwear and socks for your stay, plus spares in case you get wet
	Water bottle
	Optional: books, teddy, quiet games such as cards or board games
	Small plastic bag for dirty clothes

Please note, jeans, 'short' shorts and crop tops are not suitable for activities, we advise tracksuit bottoms. Open-toed shoes are not suitable footwear for activities.

All bed linen is provided.

- Your clothes may get dirty, so don't bring your best stuff.
- Please do not bring electronic games, radios, personal stereos or anything else that makes unnecessary noise or may get lost or broken.
- No aerosols please (our fire detectors in the bedrooms are extremely sensitive and will be triggered by spray deodorants)
- We advice bringing a suitcase or soft holdall for your main kit as it's easier than a rucksack to keep tidy.

- Christmas Jumper/Attire for the Carols and Disco.
- Any medication to be given to Mr Cooper please.

Timetable

Year 4 Action Plus Activity Programme Wednesday 20th - Friday 22nd November 2024

	Wednesday				Thursday					Friday		
	11.30	2.00-3.30	4.00-5.30	7.00-8.00	9.30-11.00	11.30-1.00	2.00-3.30	4.00-5.30	7.00-8.00	9.30-11.00	11.30-1.00	2.00
Group 1	Arrival and Welcome	Elf Games Ice Breakers	Icy Surface Training See-Saw 1	Elf Ball Disco	Sleigh Guiding Compass Course 1	Rooftop Training Traverse 2	Santa Defence Fencing 1	Present Wrapping Eggs Can Fly 1	Holly Jolly Jog Run Around Quiz	Elf Agility Challenge Gladiator 3	Saving Christmas Indoor Enigma 1	Goodbyes and depart
Group 2			Saving Christmas Indoor Enigma 1		Icy Surface Training See-Saw 1	Sleigh Guiding Compass Course 1	Rooftop Training Traverse 2	Santa Defence Fencing 1		Present Wrapping Eggs Can Fly 1	Elf Agility Challenge Gladiator 3	
Group 3			Elf Agility Challenge Gladiator 3		Saving Christmas Indoor Enigma 1	Icy Surface Training See-Saw 1	Sleigh Guiding Compass Course 1	Rooftop Training Traverse 2		Santa Defence Fencing 1	Present Wrapping Eggs Can Fly 1	

Communication

Our main source of communication and sharing is going to be through the school's Facebook page.

We are asking for permission from everyone to put pictures up onto Facebook.

Please let us know if you do not want your child's picture to be put on Facebook.

Wednesday Lunch

The first meal provided by Whitemoor Lakes will be pupils evening meal on Wednesday, therefore we are asking you to send your children into school with a packed lunch on the Wednesday to eat at Whitemoor Lakes.

Safety and Qualifications

- Qualified instructors
- National Governing Body Qualification
- Accreditations
- Regular checks – equipment
- Risk assessments and Procedures

Staff Attending:



Mr Cooper



Mrs Mayne



Mrs Crow

Any Questions?

1. Can we send Calpol with our child?
 1. - Today, your child is bringing home a letter asking if you give us permission to give your child Calpol while we are away or not. This way we can give it to them if needed without the need to contact you at that time.
2. What can we take with us for down time?
 1. - Children can bring a small teddy, a reading book, a small game and a small torch/reading light (to read before bed) if they wish.